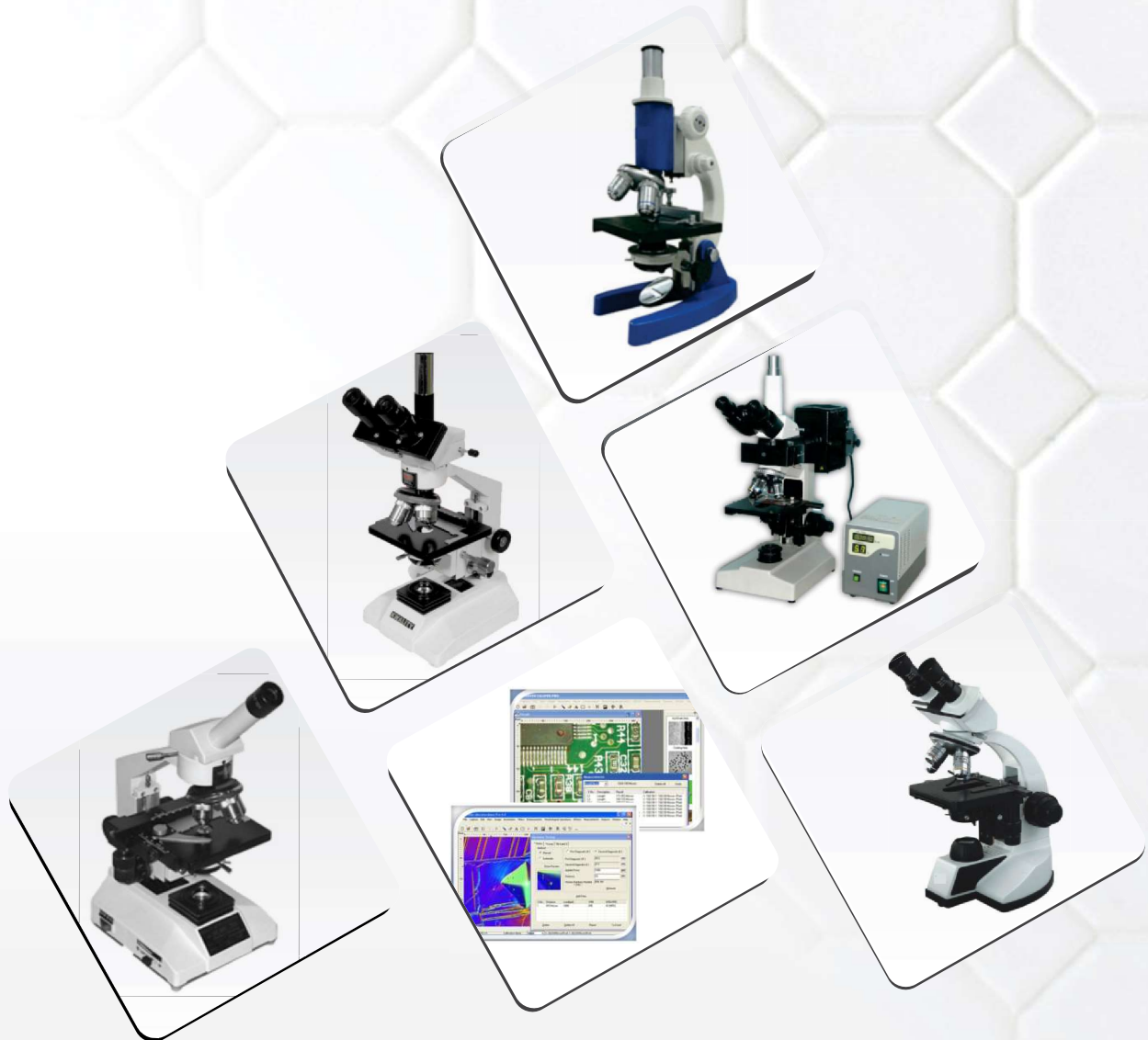


MICROSCOPES





Microscopes



**Camera Lucida
Prism Type**

Camera Lucida Prism Type (40004001)

Prism type, both the object and the paper are simultaneously visible to the observer for drawing of the focussed specimen under the microscope. It fits on the eye piece tube of all standard microscopes. Supplied in velvet lined case.

Camera Lucida Mirror Type (40004002)

Mirror type, to trace the image of a microscopic object on a paper. A beam splitter prism of optical glass is positioned over the eyepiece with a large size swinging mirror which causes the image of the object to appear on a plane surface enabling its tracing.



**Camera Lucida
Mirror Type**



Dissecting Microscope

Dissecting Microscope (40004003)

Base	Heavy round base with precisely designed body.
Focussing	Sensitive focussing, done by rack and pinion arrangement. Revolving arm provided for moving magnifying lens over full stage area.
Stage	85mm x 75mm with glass plate.
Illumination	A plano-concave lens fitted in fork for light reflection.
Optics	10x & 20x Eyepieces

Dissecting Microscope Senior (40004004)

Base	Heavy round base with precisely designed body.
Focussing	Sensitive focussing, done by rack and pinion arrangement. Revolving arm provided for moving magnifying lens over full stage area.
Stage	100mm x 100mm with glass plate.
Illumination	A plano-concave lens fitted in fork for light reflection.
Optics	10x & 20x Eyepieces & special Bull Eye Lens 83mm diameter.



**Dissecting Microscope
Senior**



Microscopes

Student Microscope (40004005)

Specifications

- Stable & Robust, traditional Horse shoe base
- Huygenian eyepiece 10x or 15x
- Body inclinable through 90°, Tube Length 160mm.
- Triple nosepiece
- A1 series Achromatic objectives 10x, 40x (SL)
- Fixed Stage size 110 x 110mm with stage clips to hold the slide
- Fixed condenser N.A 1.25, aperture selection through a Diaphragm
- Seperate coarse and fine focusing knobs. Coarse movement by Rack & Pinion and fine movement by screw lever mechanism
- Illumination system Plano concave reflector mirror mounted on gimbal mount

Included Items

Includes: Instruction Manual, Dust cloth, Dust cover.

Standard Configurations

- A1 series Achromatic objectives 10x, 40x (SL)
- Huygenian eyepiece 10x or 15x

Optional accessories

- Pin Type Lamp (Bulb/Led) 220 Volt
- Wooden Box
- Mechanical Stage



Student Microscope

Research Medical Microscope (40004006)

Specifications

Frame-	All aluminum pressure diecasted body.
Paint -	P.U. coating in light cream shade.
Nose piece-	Quadruple nosepiece.
Focusing system-	Separate course ultra smooth fine motion.
Mechanical stage-	Mechanical stage for smooth functioning.
Condenser -	Condenser Bright field sub stage condenser having 1.2 N.A.
Objectives-	10x, 40x, and 100x and a paired set of 10x wide field eyepieces.
Eye piece-	WF-10X

Standard Configurations

Objectives-
10x, 40x, and 100x

Eye piece-
WF-10X

Optional accessories

- Wooden Box
- 2/3 Mega Pixel Digitel Camera for Microscope
- Pin Type Lamp (Bulb/Led) 220V
- H10x/H15x



**Medical
Microscope**



Microscopes

Projection Microscope (40004007)

Specifications

Monocular Fixed Straight Tube, length 160mm.

Nosepiece Triple revolving nosepiece with accurate centering and positive click stops.

Stage Mechanical stage of 120x120mm.

Illumination 20W lamp, 220/110Volts. Lamp slots provided for natural cooling of the illuminator.

Objectives Achromatic 10X- 40XSL.

Eyepieces Huygenian 10X

Screen 150mm diameter Glass Projection Screen is provided, can be rotated over 360-degrees on Microscope tube.

Included Items

Includes: Instruction Manual, Dust cloth, Dust cover,

Standard Configurations

Objectives Achromatic 10X- 40XSL.

Eyepieces Huygenian 10X

Optional accessories

- Wooden Box
- Mechanical Stage



Projection Microscope

Binocular Microscope (40004008)

Specifications

Frame- All aluminum pressure diecasted body.

Paint- Powder coated, available in various desired shades.

Nosepiece- Quadruple ultra smooth nosepiece.

Focusing system- Separate knobs for cores and fine motion having least count of .002 mm.

Stage- Cxl mechanical stage works on dovetail slides. (other stages also available).
Condenser Bright field sub stage condenser having 1.2 N.A.

Eyepieces & objectives- Set of 4x, 10x, 40x, and 100x and a paired set of 10x wide field eyepieces.

Illumination- 6v, 20w halogen lamp needs 220v and 50Hz supply.

Instruction Manual, Dust cloth, Dust cover.

Standard Configurations

Eyepieces & objectives- Set of 4x, 10x, 40x, and 100x and a paired set of 10x wide field eyepieces.

Optional accessories

- Wooden Box
- 2/3 Mega pixel Digital Camera for Microscope



Binocular Microscope

LED with battery back up model also Available feel free to enquire.



Microscopes

Monocular Microscope (40004009)

Specifications

Frame- All aluminum pressure diecasted body.

Paint- Powder coated, available in various desired shades.

Nosepiece- Quadruple ultra smooth nosepiece.

Focusing system- Separate knobs for cores and fine motion having least count of .002 mm.

Stage- Cxl mechanical stage works on dovetail slides.(other stages also available).
Condenser Bright field sub stage condenser having 1.2 N.A.

Eyepieces & objectives- Set of 4x, 10x, 40x, and 100x and a paired set of 10x wide field eyepieces.

Illumination- 6v, 20w halogen lamp needs 220v and 50Hz supply.
Instruction Manual, Dust cloth, Dust cover.

Standard Configurations

Eyepieces & objectives- Set of 4x, 10x, 40x, and 100x and a paired set of 10x wide field eyepieces.

Optional accessories

- Wooden Box
- 2/3 Mega Pixel Digital Camera for Microscope

LED with battery back up model also Available feel free to enquire.



Monocular Microscope

Junior Microscope Moving Condensor (40004010)

SPECIFICATIONS AS FOLLOWS:-

- Stable & Robust, traditional Horse shoe base
- Huygenian eyepiece 10x or 15x
- Body inclinable through 90°, Tube Length 160mm
- Triple nosepiece
- A1 series Achromatic objectives 10x, 40x (SL)
- Fixed Stage size 110 x 110mm with stage clips to hold the slide
- Moving condenser by Rack and pinion, condenser N.A 1.25, aperture selection through a Diaphragm
- Separate coarse and fine focusing knobs. Coarse movement by Rack & Pinion and fine movement by screw lever mechanism
- Illumination system Plano concave reflector mirror mounted on gimbal mount

Optional Accessories

Wooden Box

2/3 Mega pixel Digital Camera for Microscope

Pin Type Lamp (Bulb/Led)220v



Junior Microscope



Microscopes

Single Nose Microscope (40004011)

Specifications

- Stable & Robust, traditional Horse shoe base
- Huygenian eyepiece 10x or 15x (any ONE)
- Body inclinable through 90°, Tube Length 160mm
- A1 series Achromatic objectives 10x
- Fixed Stage with stage clips to hold the slide
- SMOOTH coarse focusing knobs. Coarse movement by Rack & Pinion
- Illumination system Plano concave reflector mirror mounted on gimbal mount

Included Items

Includes: Instruction Manual, Dust cloth, Dust cover.

Standard Configurations

- A1 series Achromatic objectives 10x
- Huygenian eyepiece 10x or 15x (any ONE)

Optional accessories

- Eye Piece
- Light Source



Single Nose Microscope

Trinocular Microscope (Economical Model) (40004012)

Frame- All aluminum pressure diecasted body.

Paint - P.U. coating in light cream shade.

Nose piece- Quadruple nosepiece.

Binocular head- 360° rotate able and 45° inclined head with all anti-fungus coated prisms.

Focusing system- Coarse and Fine motion moving on rack and pinion

Mechanical stage- Cxl mechanical stage for smooth functioning.

Condenser - Condenser Bright field sub stage condenser having 1.2 N.A.

Objectives-

4x, 10x, 40x, and 100x.

Eye piece-

WF-10X (Pair)

Illumination-

6v, 20w halogen lamp needs 220v (50Hz), 110V(60Hz) optional supply.

Optional accessories

- Wooden Box
- 2/3 Mega pixel Digital Camera for Microscope
- Phase contrast kit.
- Dark filled condensor
- Digital Camera(10/12/15 Mega Pixel)
- Image Analysis Software



Trinocular Microscope

LED with battery back up model also Available feel free to enquire.



Microscopes

Trinocular Microscope Research Model (40004013)

Frame- All aluminum pressure diecasted body.

Paint - P.U. coating in light cream shade.

Nose piece- ultra Quadruple ball bearing nosepiece.

Binocular head- 360° rotate able and 45° inclined head with all anti-fungus coated prisms.

Focusing system- fine Co-axial focusing system with three planetary gears assb.

With slide protection lock.

Mechanical stage- CxI Ball bearing double layer mechanical stage for smooth functioning.

Condenser - Condenser Bright field sub stage condenser having 1.2 N.A.

Objectives-

(Semi Plan Series) 4x, 10x, 40x, and 100x

Eye piece-

WF-10X (20mm)

Illumination-

6v, 20w halogen lamp needs 220v (50Hz), 110V(60Hz) optional supply.

Optional accessories

- 2/3 Mega pixel Digital Camera for Microscope
- Phase contrast kit.
- Dark filled condensor
- Digital Camera(10/12/15 Mega Pixel)
- Image Analysis Software

LED with battery back up model also Available feel free to enquire.



Trinocular Microscope
Research Model



Trinocular Microscope

Trinocular Microscope (40004014)

Frame- All aluminum pressure diecasted body.

Paint - P.U. coating in light cream shade.

Nose piece- Ultra Quadruple ball bearing nosepiece.

Binocular head-

360° rotate able and 45° inclined head with all anti-fungus coated prisms.

Focusing system-

fine Co-axial focusing system with three planetary gears assb. With slide protection lock.

Mechanical stage-

CxI Ball bearing double layer mechanical stage for smooth functioning.

Condenser -

Condenser Bright field sub stage condenser having 1.2 N.A.

Objectives-

(Semi Plan Series) 4x, 10x, 40x, and 100x

Eye piece-

WF-10X (18mm)

Illumination-

6v, 20w halogen lamp needs 220v (50Hz), 110V(60Hz) optional supply.

Optional accessories

- 2/3 Mega pixel Digital Camera for Microscope
- Phase contrast kit.
- Dark filled condensor
- Digital Camera(10/12/15 Mega Pixel)
- Image Analysis Software

LED with battery back up model also Available feel free to enquire.



Microscopes

Video Microscope (Binocular) (40004017)

Binocular inclined at 45° Rotatable 360°

- Achromatic objectives 4x, 10x, 40x, (SL) 100x oil (SL)
- Fine Adjustment : 0-180 knob for slow Motion & Highly Sensitive Fine Motion
- WF 10x Eye Piece Pair
- Co-axial Mechanical Strage
- Quadruple Revolving Nose Piece with Accurate Centring and Positive Click Stop
- in built High Resolution 1/4" colour CCD Camera

Simultaneous Multi-Model Display : Through Eye Piece Through Direct Video Display

- **Note :** Our Microscope with CCD Camera Unit Can Be Directly Attached to T.V. Through
- A.V. Leads for Direct Observation on T.V. Screen

Technical Data of Image Device

Power Source - DC 12V + 10%

Image Device - 1/4" Color CCD Image Sensor NTSC PAL Output

Resolution - 380 Tv Line/720X576 Pixels (PAL) 720 x 480 Pixels

(NTSC) Light Sensitivity - 0.5 Lux (F 2.0" k)

Interface - Composite Video AV Mode 7500 Ohm/Optical USB Ver 2.0

White Balance - Auto

Electronics Shutter Speed - 1/55 1-100000 Sec.

Current Composition - 12ma

System Requirements - L.E.D / L.C.D / Television for Live View

Optical Accessories - Tv Tuner Card, Image Analysis Software



Video Microscope

Penta Microscope (40004018)

PENTA HEAD-MULTIVIEWING MICROSCOPE:

Incorporate in innovative optical and structural design ideas, facilitating group discussion and consultation by five observers during important meeting, conferences and seminars Penta Head is equipped with five observation head, included at for comfortable viewing, include the central Trinocular Head to accept optical photo micrography and video Equipments. The built is LED Green Light Pointer, with adjustable brightness can be moved in the filed of view during group discussion supplied as above with following infinity corrected plan options.

Eyeiece-WF 10x/20-5Pairs

TECHNICAL SPECIFICATION:

EYEPIECE: Ultrawide fields and compensating WF 10x paired eyepiece(Field no.22)-5 pairs.

FOCUSING: Low and forward position Co-axial coarse and fine focusing mechanism supported on ball bearing with tension control ring and pre-focus stopper. Coarse focus 30mm.Fine motion reading to 0.002mm.

MAGNIFICATION: 40X-1000X Standard Optionally upto 2000X

CONDENSER: Swing out condenser N.A. 0.9/0.25 to provide perfect illumination under all mangnification to all the observers.

PLAN OBJECTIVE:

Infinity Corrected Super Plan Objective 4x,10x,40x,100x(anti Fungus)

LIGHT POINTER:

A Moveable Built In Green Led Pointer(brightness Adjustable)is Supplied As A Standard Accessory.

OBSERVATION HEAD:

One number high Transmission sidentopf Trinocular head include Compensation free 360 roatable. Four numbers compensations free Binocular Head inclined and 360 rotatable.

OPTICAL SYSTEM: Infinity corrected plan optical with Din Standard optics(True Colour).

NOSEPIECE:

Inward revolving quintuple nosrpiece with ball bearing system for perfect alignment.



Penta Microscope



Microscopes

ILLUMINATION : koehlers illumination with 12V/50W super bright halogan lamp with variable control.

Standard Configurations

Eyeiece:

Ultrawide fields and compensating WF 10x paired eyepiece(Field no.22)-5 pairs.

Plan Objective:

Infinity Corrected Super Plan Objective 4x,10x,40x,100x(anti Fungus)

Optional accessories

- 5/8 Mega pixel Digital Camera for Microscope
- Phase contrast kit.
- Dark filled condensor
- Digital Camera(10/12/15 Mega Pixel)
- Image Analysis Software

Optional accessories

- 2/3 Mega pixel Digital Camera for Microscope
- Phase contrast kit.
- Dark filled condensor
- Digital Camera(10/12/15 Mega Pixel)

Image Analysis Software

Stage : SUPER HARD COATED Large Mechanical Stage 185x145mm with low position co-axial X-Y motion controls. X-Y motion 75mm x 55mm.

Magnification: 40X-100X STANDARD Optionally upto 2000X.

Research Binocular Microscope (40004020)

Specifications

Fungus Treated

- Binocular or Trinocular tube, 45° inclined, 360° Rota table, IPD 55-75 mm, with
- Dioptic adjustment on left ocular
- Wide Field eyepiece WF 10x/18mm paired with eye guards.
- Quintuple Nosepiece with parcentric click stops
- SP series DIN Semi Plan Achromatic objectives 4x, 10x, 40x (Spring loaded) and 100x (Spring loaded), Oil immersion.
- CO AXIAL mechanical stage cross travel 76 x 50mm on ball bearing with co-axial control, Spring clip Double Slide Holder
- Moveable Sub-stage ABBE condenser NA 1.25 with aspheric lens. Iris diaphragm and
- special day light blue filter in swing out filter holder
- Co-axial coarse fine focusing with tension control and refocus lock
- Illumination system 6V-20W Halogen

Instruction Manual, Dust cloth, Dust cover.

Optional accessories

- 2/3 Mega pixel Digital Camera for Microscope
- Phase contrast kit.
- Dark filled condensor
- Digital Camera(10/12/15 Mega Pixel)
- Image Analysis Software



Research Binocular Microscope

Phase Contrast Microscope (40004021)

Stand : Rigid & Heavy single mold aluminum die-cast stand.

Observation Head : Binocular or Trinocular head inclined at 45o and rotatable in 360o lockable at any angle. Both eyepiece tubes focusable to match objectives tube length. Interpupillary distance adjustments provided.

Eyepiece : KEOWA H6x and HKW 10x (Paired) & one centering telescope eyepiece.

Nosepiece : Quadruple ball bearing nosepiece with POSITIVE click stop & rubber grip.

Objectives : Achromatic objectives PH. objectives PH 10x, PH 20x, PH 40x, PH 100x.



Phase Contrast Microscope



Microscopes

Stage : MECHANICAL stage(Ball Bearing Type) of size 120x140mm having low positioned co-axial controls. Both X & Y axis having graduated scale & verniers reading to 0.1mm.

Focusing : Co-axial fine & coarse focusing control with ball bearing guideways based on four stage gear reduction system, free from any back lash & large knobs provide a soft & sophisticated touch to the microscope.

Tension Control Ring : Enable you to adjust tension on coarse focusing knobs.

Condenser : PH. contrast condenser, Annular diaphragm turn plate, a centring telescopic eyepiece, Focusable Abbe two lens type condenser NA 1.25 fitted with iris diaphragm and swing out filter holder with blue filter moving up and down through rack and pinion mechanism.

Phase Contrast Attachment : Phase Annular Rings built inside matching with annular Phase plates provided in a substage condenser having a turret to bring in position the required Phase Rings suitable for the particular objective which is in position.

Illumination : Built-in Base illumination with 6V-20W halogen lamp & intensity controlled power supply.

Electricals : Built-in transformer with universal input 100v-240v ac.

Packaging contents :

- Packed in shockproof Styrofoam molded box or in a plywood cabinet having provision for placing eyepieces, objectives.
- Nylon Dust cover.
- Detachable power cord and 3-pin plug.

Optional accessories

2/3 Mega pixel Digital Camera for Microscope
Phase contrast kit.
Dark filled condensor
Digital Camera(10/12/15 Mega Pixel)
Image Analysis Software



Phase Contrast Microscope

Metallurgical Microscope (40004023)

A latest binocular/ trinocular inverted metallurgical microscope having co-axial coarse and fine motion assembled on ball bearing guides, equipped with horizontal illuminator with centring provision, field and aperture diaphragm and slots for dropping filters. Built in base variable solid state transformer. Large sturdy stage with X-Y axis movements.

Objectives : M 5x, M 10x, M 20x

Eye pieces : WF 10x (paired)

Micrometer Eye Piece (optional) : Fitted with 10mm scale in 100 parts.
Object Micrometer

Object Micrometer Slide : 1mm in 100 division

Filters : Green, Yellow, Blue, Daylight blue in metal mount.

Filar Micrometer Eyepiece Grain Size eyepiece(optional) : WF 10x with 8 grain chart for rapid comparison of micro structure.



Metallurgical Microscope



Microscopes



Polarizing Microscope

Polarizing Microscope (40004024)

Polarizing Microscope are principal piece of equipment used by the Geologists to observe the optical properties of minerals. It has indispensable applications for petrography, crystallography, geology, mineralogy, ceramics, toxicology, chemical microscopy or detecting defects in semi-conductors, finding stress points in metals, glass & textiles etc.

Stage - Compact Ball bearing Rotating Stage, 140mm dia., graduation with vernier, lock & stage specimen clips.

Focusing - Coaxial focusing is provided with coarse tension adjustment ring and graduated slow motion knobs. Adjustable safety lock is attached to prevent the breakage of specimen slides.

Illuminator - Koehler's Illuminator with pre-centered 20W Tungsten Halogen source & integral electric transformer with intensity control. Input Voltage 220 or 110V.

Intermediate Tube - Built-in focusable Bertrand Lens with center adjustment. Built-in Analyzer removable from optical part. Analyzer can be rotated 90° with vernier reading to 6'. Compensator 1 Lambda, 1/4 Lambda & Quartz Wedge can be inserted in the tube as per requirement.

Compensator - Gypsum (1st. order red compensating plate, 560nm). Mica (145nm) & Quartz Wedge (I-IV order).

Objectives - Stress less flat achromatic DIN Objectives PF4x/0.10, PF10x/0.25 & PF40x/0.65 SL

Eyepieces - HKW10x Paired & WF 10x Cross.

Polarizer - Fully rotatable Polarizer on a strain free N.A 1.25 abbe condenser with iris diaphragm.

Optional Accessories - Detachable Mechanical Stage, Objectives PF20x & PF60X, Micrometer Eyepiece WF10x, Microphotographic Equipment, 30° Inclined Sieden opf Heads



Microscopes

Fluorescence Microscope (40004025)

Specifications

Standard features

- Binocular or Trinocular tube, 45°/ 30 inclined, 360° rotatable, IPD 55-75 mm, with Dioptic adjustment on left ocular
- Coaxial Fine and Coarse Focusing Knobs on Both Sides of Microscope. Coarse Adjustment Travel
- Range: 22mm. (Stage Movement Distance Up/Down).
- Fine Adjustment Division: 0.002mm., Adjustable Lock Ring Stop to Limit Coarse Range to Protect
- Slides, Tension Adjustable Coarse Focusing.
- Wide Field eyepiece WF 10x/16mm paired with eye guards
- Transmitted Koehler Illumination system 6V-20W Halogen with intensity control
- Epi-fluorescence unit: power unit 220V, mercury lamp house 100W/DC, epi-fluorescence
- illuminator
- Excitation filter (EX) comprising of - Blue light (EX-490), Green Light (EX-545)
- Illumination Box with Power Supply Unit 220 Volt & HBO, Super High – pressured Spherical mercury
- vapor lamp 100W
- Instruction Manual, Dust cloth, Dust cover.

Standard Configurations

- DIN Fluorescent Achromatic Objectives 4x, 10x, 40x (Spring loaded) and 100x (Spring loaded), Oil immersion

Optional accessories

- Digital Camera (10/12/15 Mega Pixel)
- Image Analysis Software



Fluorescence Microscope

Dual Discussion Microscope (40004026)

- The Dual discussion Co-axial Research Binocular Microscope permits simultaneously viewing.
- The same image and provide a facility of discussing about the specimens. It assures comfort for both observers, because all four eye pieces are at the same height.
- It also helps in the training of new staff or students and makes discussions easier. It saves your lots of valuable time.
- Co-Axial Coarse and fine focusing knobs, provide the highest Degree of working convenience. The coarse adjustment has a built-in controls to increase and decrease the tension of the focusing knob simply by rotating the adjustment ring. The mechanism is free from Back Lash Fine Motion 0-180.
- The fine adjustment works over the entire coarse focusing range, allowing quick, accurate focusing at any position.
- Built in graduated low friction coaxial mechanical stage 140 mm x 130 mm mechanical stage travelling. 50 mm x 130 mm.
- Ultra Smooth Quadruple nose piece revolving on ball bearing.
- Binocular head inclined at 45° rotatable through 360° with multi layer coated prisms for better performance.
- Bright Field Abbe N.A. 1.25 Condenser with Iris Diaphragm moved on Rack & Pinion.
- Built in Base 6V-20W Halogen Lamp with Solid-State Variable controlled transformer 220/110 volts.

Packing: Thermacol Box in wooden box with lock & key & cardboard packing.

Eye Piece

W.F. 10x-2 Pair

Objectives

4x, 10x, 40x, 100x
(Din Standard) A Grade



Dual View Microscope



Microscopes

Led(cordless) Microscope (40004027)

Specifications

Product Overview

Rechargeable Battery Powered Variable Intensity LED
High Power Compound Binocular Microscope!
Great Scope for Students, Teachers, Hobbies, or for anyone wanting to learn more about the Micro World!
Clear and Bright Biological Images through Premium Optics!
Great Economical Price! Priced Hundreds Lower than Competition!

Illumination

LED Bulbs for Bright and Efficient Illumination.
Rechargeable Battery Powered Electrical System (12 to 16 hour).

Microscope Head Features

Binocular Microscope head on ergonomic 45 degree viewing angle with capability to rotate head 360 degrees.
The interpupillary distance, distance between the microscope eye tubes, adjusts from 55 to 75mm to fit each user.
Both ocular eyetubes have a diopter adjustment allowing for correction of vision through the microscope optics.
Substage Light Condenser and Filters
Abbe substage light condenser with 1.25 numerical aperture, condenser focusing knob, filter holder and iris light diaphragm. These microscope parts allow for optimal focusing and control of light on the specimen.
Light filters include blue

Eyepiece Details - Magnification

Eight Choices of Microscopic Magnification: 40x, 64x, 100x, 160x, 400x, 640x, 1000x, and 1600x
Microscope kit includes two eyepiece sets to vary magnification: Wide Field 10x and 16x
DIN standard microscope objectives: 4x, 10x, 40x, 100x (oil immersion lens)
The 40x and 100x microscope objectives have a spring to protect the glass specimen slide as well as the lens.

Specimen Focusing Details :

Coarse focusing knobs move microscope stage up and down with a travel range of 20mm.
Fine focusing adjustment knob with division of 0002mm movement
Coarse focusing tension can be adjusted
Stage travel has adjustable screw to limit movement. This can be set to protect microscope objective and slide from coming too close. Included Items.
Includes: Instruction Manual, Bottle of Immersion Oil, and Fuse.

Optional accessories :

- 2/3 Mega pixel Digital Camera for Microscope
- Phase contrast kit.
- Dark filled condensor
- Digital Camera(10/12/15 Mega Pixel)
- Image Analysis Software



Dual View Microscope



Microscopes

Research Pathological Microscope (40004028)

Specifications

Frame-

All aluminum pressure diecasted body.

Paint-

P.U. coating in light cream shade.

Nose piece-

Reverse type ultra Quadruple ball bearing nosepiece.

Binocular head-

360° rotate able and 30° inclined head with all anti-fungus coated prisms.

Focusing system-

fine Co-axial focusing system with three planetary gears assb. With slide protection lock.

Mechanical stage-

Cxl Ball bearing double layer mechanical stage for smooth functioning.

Condenser-

Condenser Bright field sub stage condenser having 1.2 N.A.

Objectives-

4x, 10x, 40x, and 100x and a paired set of 10x wide field eyepieces.

Eye piece-

WF-10X (20mm)

Illumination-

6v, 20w halogen lamp needs 220v (50Hz), 110V(60Hz) optional supply.

Standard Configurations

Objectives-

4x, 10x, 40x, and 100x and a paired set of 10x wide field eyepieces.

Eye piece-

WF-10X (20mm)

Optional accessories

- 2/3 Mega pixel Digital Camera for Microscope
- Phase contrast kit.
- Dark filled condensor
- Digital Camera(10/12/15 Mega Pixel)
- Image Analysis Software



**Research Pathological
Microscope**

Stereo Microscope (40004029)

Specifications

Observation Head:

Binocular head inclined at 45-deg., rotated through 360-deg with adjustable inter-pupillary distance.

Focussing:

By Rack and Pinion mechanism with adjustable tension collar.

Magnification:

Standard magnification 20X & 40X with flat field.

Illumination:

With integral illuminator, 2 lamps are fitted to provide both transmitted and incident illumination.

Standard Configurations

Objectives:

2 sets of objectives 2X and 4X, selected by rotating nosepiece through 90-degrees.

Eyepieces:

Standard extra wide field eyepieces WF-10X is provided.

Optional accessories

Objective 1x , 2x

Universal Stand

USB Digital Camera.



Stereo Microscope



Microscopes

Student Stereo Microscope (40004030)

Specifications**Observation Head:**

Straight Binocular head with interpupillary adjustment & hand grip.
Objectives.

Stage:

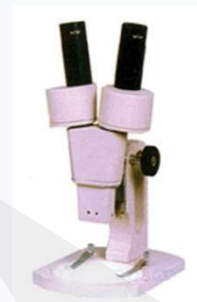
Stage with clips and reversible black & white plate.

Standard Configurations**Objectives:**

Fixed Achromatic Objectives 2X or 3X.

Eyepieces:

Wide field Eyepieces WF 10X.



Student Stereo Microscope

Led Cordless Microscope (40004032)

Specifications**Product Overview**

Rechargeable Battery Powered Variable Intensity LED
High Power Compound Binocular Microscope!
Great Scope for Students, Teachers, Hobbies, or for anyone wanting to learn more about the
Micro World!
Clear and Bright Biological Images through Premium Optics!
Great Economical Price! Priced Hundreds Lower than Competition!

Illumination

LED Bulbs for Bright and Efficient Illumination.
Rechargeable Battery Powered Electrical System (12 to 16 hour).

Microscope Head Features

Binocular Microscope head on ergonomic 45 degree viewing angle with capability to rotate head
360 degrees.
The interpupillary distance, distance between the microscope eye tubes, adjusts from 55 to 75mm
to fit each user.
Both ocular eyetubes have a diopter adjustment allowing for correction of vision through the
microscope optics.

Substage Light Condenser and Filters

Abbe substage light condenser with 1.25 numerical aperture, condenser focusing knob, filter
holder and iris light diaphragm. These microscope parts allow for optimal focusing and control of
light on the specimen.
Light filters include blue

Eyepiece Details - Magnification

Eight Choices of Microscopic Magnification: 40x, 64x, 100x, 160x, 400x, 640x, 1000x, and 1600x
Microscope kit includes two eyepiece sets to vary magnification: Wide Field 10x and 16x
DIN standard microscope objectives: 4x, 10x, 40x, 100x (oil immersion lens)
The 40x and 100x microscope objectives have a spring to protect the glass specimen slide as well
as the lens.

Specimen Focusing Details:

Coarse focusing knobs move microscope stage up and down with a travel range of 20mm.
Fine focusing adjustment knob with division of 0.002mm movement
Coarse focusing tension can be adjusted
Stage travel has adjustable screw to limit movement. This can be set to protect microscope
objective and slide from coming too close. Included Items.
Includes: Instruction Manual, Bottle of Immersion Oil, and Fuse.

Optional accessories

- Eye Piece
- Wooden Box
- Digital Camera for Microscope.
- 2/3 Mega pixel Digital Camera for Microscope
- Phase contrast kit.
- Dark filled condensor
- Digital Camera (10/12/15 Mega Pixel)
- Image Analysis Software



Led Cordless Microscope



Microscopes

Led Cordless Microscope (40004033)

Specifications

Product Overview

Rechargeable Battery Powered Variable Intensity LED
High Power Compound Binocular Microscope!
Great Scope for Students, Teachers, Hobbies, or for anyone wanting to learn
more about the Micro World!
Clear and Bright Biological Images through Premium Optics!
Great Economical Price! Priced Hundreds Lower than Competition!

Illumination

LED Bulbs for Bright and Efficient Illumination.
Rechargeable Battery Powered Electrical System (12 to 16 hour).

Microscope Head Features

Binocular Microscope head on ergonomic 45 degree viewing angle with
capability to rotate head 360 degrees.
The interpupillary distance, distance between the microscope eye tubes,
adjusts from 55 to 75mm to fit each user.
Both ocular eyetubes have a diopter adjustment allowing for correction of
vision through the microscope optics.

Substage Light Condenser and Filters

Abbe substage light condenser with 1.25 numerical aperture, condenser
focusing knob, filter holder and iris light diaphragm. These microscope parts
allow for optimal focusing and control of light on the specimen.
Light filters include blue

Eyepiece Details - Magnification

Eight Choices of Microscopic Magnification: 40x, 64x, 100x, 160x, 400x, 640x,
1000x, and 1600x
Microscope kit includes two eyepiece sets to vary magnification: Wide Field 10x
and 16x
DIN standard microscope objectives: 4x, 10x, 40x, 100x (oil immersion lens)
The 40x and 100x microscope objectives have a spring to protect the glass
specimen slide as well as the lens.

Specimen Focusing Details:

Coarse focusing knobs move microscope stage up and down with a travel
range of 20mm.
Fine focusing adjustment knob with division of 0002mm movement
Coarse focusing tension can be adjusted
Stage travel has adjustable screw to limit movement. This can be set to protect
microscope objective and slide from coming too close. Included Items.
Includes: Instruction Manual, Bottle of Immersion Oil, and Fuse.

Optional accessories

- Eye Piece
- Wooden Box
- Digital Camera for Microscope.
- 2/3 Mega pixel Digital Camera for Microscope
- Phase contrast kit.
- Dark filled condensor
- Digital Camera(10/12/15 Mega Pixel)
- Image Analysis Software



Led Cordless Microscope



Softwares

Micro Measurement Software (4004034)

Image Editing

Cut, Copy, and Paste.

Selected copy by free hand AOL controlled by four arrow keys available on keyboard or mouse with zoom preview.

Crop, duplicate, restore

Resize

Compression

Conversion to other format BMP, JPG, TIF, PNG, GIF & PSD

Flood fill or spray with selected color at selected portion.

Grid creation; 5X5, 10X10 & 100X100 lines.

Drawing tool curve, line, square, and circle with node control and provision to change color & thickness of the line

Write text in any color or font.

Pointer to place on an object in four directions with provision to change its color & thickness.

Eraser works only on line, arrow or on any drawing tool.(not on original image)

Camera Lucida

Montage feature to merge stored image together. Useful to Merge different focuses of same image.

Image stitching.

Highlighter.

Pixel by Pixel Correction by key board.

Multiple image folder with Search facility.

Filter application on selected area.

View & Image Processing

View

Zoom in/out

Zoomed preview

Rotation at 90, 180, 270 or custom

Image flipping; horizontal or vertical axis

Intensity histogram.

Image Information

Redo/Undo on all operations.

Ruler in Various units.

Slide show.

Image Processing

Background subtraction and contrast enhancement of color or monochrome images

Arithmetic image functions (Boolean Math; Add, AND, OR, XOR, DIFF, MIN, MAX, +, -, /, *, And Simple).

Routine Filters

Invert, Brightness, Contrast, Hue, Saturation, Blur, Noise Remove, Emboss, Engrave, Gamma R, Gamma G, Gamma B, Yellow, Magenta, Cyan, Mosaic, Smooth, Desaturation, Pseudo Color, Colorize, Oilify, Despeckle, Postarize.

Special Filters & Kernels

High Boost, High Spatial, Low Pass Spatial, Ranking (Max, Med, Min), Point detection, Line detection, Homogeneity.



**Micro Measurement
Software**



Softwares

Edge Detection & Report

Edge Detection

Laplacing, Sobel, Kirsch, Prewitt Gradient, Shift & Difference, Combine, Contrast Base, Quick, Range And Variance.

Morphometry

Skelotizing, Pruning, SKIZ, Histogram Equalization, Histogram Smoothing, Histogram Peak, Histogram Valley, Segmentation by Over/Under and Quantized, Contouring, Dilation / Erosion on Binary, Gray & colored Images, Opening/ Closing on Gray & Binary Images, Special Opening/Closing, Split/Combine Of RGB, YUV, YIQ, XYZ, & HSL, Changing any Image to 1, 4, 8 & 24 Bits, Medial Axis. Transformation, Halftone.

Image Addition, Image Average, Image Subtraction, Image Multiplication.

Measurement

Spartial calibration

Line measurements for Distance, Length, Width, Perimeter, Angle, Three Point Radius.

Area by enclosed line controlled by four arrow keys available on keyboard arrows with zoomed preview.

Report

Three options: Direct printout with original image processed Image & Tabular results

Export to MS Office or Excel for further modification.

Medical Software (40004035)

Image Editing

Cut, Copy, and Paste.

Selected copy by free hand AOL controlled by four arrow keys available on keyboard or mouse with zoom preview.

Crop, duplicate, restore

Resize

Compression

Conversion to other format BMP, JPG, TIF, PNG, GIF & PSD

Flood fill or spray with selected color at selected portion.

Grid creation; 5X5, 10X10 & 100X100 lines.

Drawing tool curve, line, square, and circle with node control and provision to change color & thickness of the line.

Write text in any color or font.

Pointer to place on an object in four directions with provision to change its color & thickness.

Eraser works only on line, arrow or on any drawing tool.(not on original image)

Camera Lucida

Montage feature to merge stored image together. Useful to Merge different focuses of same image.

Image stitching.

Highlighter.

Pixel by Pixel Correction by key board.

Multiple image folder with Search facility.

Filter application on selected area.



Medical Software



Softwares

View & Image Processing

VIEW

Zoom in/out
Zoomed preview
Rotation at 90, 180, 270 or custom
Image flipping; horizontal or vertical axis
Intensity histogram.
Image Information
Redo/Undo on all operations.
Ruler in Various units.
Slide show.

Image Processing

Background subtraction and contrast enhancement of color or monochrome images

Arithmetic image functions (Boolean Math; Add, AND, OR, XOR, DIFF, MIN, MAX, +, -, /, *, And Simple).

Routine Filters

Invert, Brightness, Contrast, Hue, Saturation, Blur, Noise Remove, Emboss, Engrave, Gamma R, Gamma G, Gamma B, Yellow, Magenta, Cyan, Mosaic, Smooth, Desaturation, Pseudo Color, Colorize, Oilify, Despeckle, Postarize.

Special Filters & Kernels

High Boost, High Spatial, Low Pass Spatial, Ranking (Max, Med, Min), Point detection, Line detection, Homogeneity.

Edge Detection & Report

Edge Detection

Laplacing, Sobel, Kirsch, Prewitt Gradient, Shift & Difference, Combine, Contrast Base, Quick, Range And Variance.

Morphometry

Skelotizing, Pruning, SKIZ, Histogram Equalization, Histogram Smoothing, Histogram Peak, Histogram Valley, Segmentation by Over/Under and Quantized, Contouring, Dilation / Erosion on Binary, Gray & colored Images, Opening/ Closing on Gray & Binary Images, Special Opening/Closing, Split/Combine Of RGB, YUV, YIQ, XYZ, & HSL, Changing any Image to 1, 4, 8 & 24 Bits, Medial Axis. Transformation, Halftone.

Image Addition, Image Average, Image Subtraction, Image Multiplication.

Measurement

Spatial calibration

Line measurements for Distance, Length, Width, Perimeter, Angle, Three Point Radius.

Area by enclosed line controlled by four arrow keys available on keyboard arrows with zoomed preview.

Count And Classification

Identification of objects in an image, count them, obtain several features measurements. Objects identification by user or automatically. User defined classification on basis of size or intensity.

Threshold Particle Measurement

Manual, Auto bright and Auto dark methods to identity intensity range defined object to be measured. Various calculation & measurements available for selected Particle are; Dimensions, Area, Perimeter, Ferrite Length, Min/Max Radius, Thread Length, Thread Width, Fiber Length, Fiber Width.



Softwares

Morphometry

Roundness, Shape, Orientation, Elongation, Equal Circular Diameter, Equal Sphere Volume.

Locational

Centroid X, Centroid Y, Major X1, Major Y1, Minor X1, Minor Y1, Major X2, Major Y, Major X2, Minor Y2, Box X1, Box X2, Box Y, Box Y2 & Box Area.

Segmentation

Measure area fraction & volume fraction. Identify multiple phases within Microstructure. Also delineate phases from the histogram.

Report

Three options: Direct printout with original image processed Image & Tabular results
Export to MS Office or Excel for further modification.

Weld Penetration Software (40004036)

Weld Check software is a powerful easy-to-use tool that enhances your ability to quickly and efficiently handle your most critical welding measurement and documentation software needs. Your workflow and productivity are greatly improved. Weld Check has been designed with your welding cross-section measurement needs in mind. Weld Checks measurement module allows you to quickly measure such items as your fillet welds, throat, leg lengths and penetration.

Use Weld Check Measurement Tolerance indicator to improve performance by having the software automatically tell you if a measurement is out of the tolerance range.

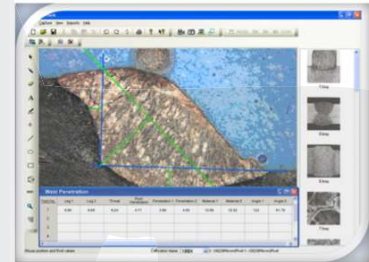
Report

The following report concerns the analysis of a fillet weld, a weld of approximately triangular cross section joining two surfaces at approximately right angles to each other. Important measurements made by the distance from the root if the fillet to the center of the face (or throat), the distance from the root of the joint to the junction between the exposed surface of the weld and the base metal (or leg), the angles and the root penetration. Measurements that could have been done with the same ease or similar sample are among others : depth of HAZ (heat affected zone), area of HAZ, joint penetration, phase counting, etc.

Measurements

The measurement remain unaffected if the image is zoomed for better accuracy. The magnifier tool is also available which can be switched on any part of image. The tool zooms only the region surrounding the cursor allowing to increase the drawing precision while still seeing the whole sample.

Image analysis system can measure a sequence of specific characteristics or welded parts. The system brings the good tool with the good color when its the time for the operator to use it.



**Weld Penetration
Software**



Softwares

Hardness Software (40004037)

Brinell Hardness

Micro Hardness testing applied in areas including metallography, precision mechanics, electroplating, material testing and material science. In order to determine microhardness, different shaped indents are pressed into flat material samples with a defined force. Three methods available are :

Brinell Hardness

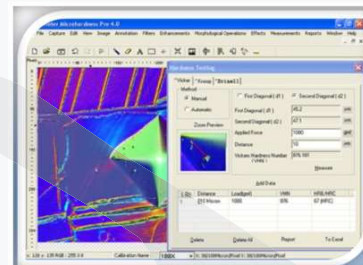
In Brinell hardness test, an indentation hardness test in which a hardmetal ball is forced into the surface of a test piece, mean diameter of the indentation is left on the surface after removal of the test force is measured. The Brinell hardness HBW is obtained by software.

Vickers Hardness

The Vickers hardness test, measure length of the diagonals of indentation left in the surface in which a Square-based diamond pyramid, having an angle of 136 degree between the opposite faces at the vertex, is forced. The Vickers hardness is obtained by dividing the test force by the area of the sloping faces of the indentation. The Vickers hardness HV is displayed by software.

Knoop Hardness

The Knoop hardness test is an indentation hardness test in which a rhombic-based diamond pyramid, having an included longitudinal edge angle of 172.5 degree and an included transverse edge angle of 130 degree, is forced into the surface of a test piece. The length of the long diagonal of the indentation left in the surface after removal of the test force. The Knoop hardness HK is calculated by software.



Hardware Software

Cast Iron Analysis Software (40004038)

The software is totally automatic and provides very accurate analysis about non-Nodules / Nodules, Flakes Matrix percentage of Graphite, Pearlite, Ferrite & Carbide. Two separate module for SG Iron & Cast Iron further simplified the software working. Flakes are reported according to ASTM size no. 1 to 8 & type distribution percentage A, B, C, D, E is calculated automatically.

Specifications

- The software is totally automatic and provides complete analysis of micro structure of cast Iron.
- ASTM 247-67, ISO 945-1, IS 945-1, DIN EN945, JIS G 5504 standards.
- Separate modules for Gray cast iron & SG/Ductile iron
- Nodules are separated from Non-Nodules on predefined spheroidicity.
- The Module form IV, Distribution (designated by capital letter A to E) and size (Designated by Arabic No 1 to 8) is reported.
- The Flakes occurring in cast iron is reported by form I, distribution (designated by capital letter A to E) and size designated by Arabic no 1 to 8).
- The percentage of PEARLITE is calculated by excluding the GRAPHITE area. The matrix of
- PEARLITE, FERRITE, GRAPHITE & CARBIDE are reported in etched sample.
- Report is generated with specific International standard. F% is reported in JIS Method.



Softwares

Metallurgical Software (40004039)

Application Program are set in the simplest way without compromising accuracy so that inexperienced operator can also make analysis with a minimum of training. Our current portfolio of metallurgy solutions are Nodules analysis, Coating Thickness Measurement, Depth of Width Measurement of Decarburization, Phase percentage with display by colored overlays, Grain Size No., Porosity Analysis, Graphite Flakes Measurement, Non-Metallic Inclusion Rating, Particle Size and Volume Percentage with lot make software complete. Generated reports can be saved or printed with images, Histogram, Data Overlays colors and various other related information.

Image Editing View

- Cut, Copy, and Paste.
- Selected copy by free hand AOL controlled by four arrow keys available on keyboard or mouse with zoom preview.
- Crop, duplicate, restore
- Resize
- Compression
- Conversion to other format BMP, JPG, TIF, PNG, GIF & PSD
- Flood fill or spray with selected color at selected portion.
- Grid creation; 5X5, 10X10 & 100X100 grids (or cells).
- Drawing tool curve, line, square, and circle with node control and provision to change color & thickness of the line.
- Write text in any color or font.
- Pointer to place on an object in either of four directions with provision to change its color & thickness.
- Eraser works only on line, arrow or on any drawing tool.(not on original image)
- Camera Lucida
- Montage feature to merge stored image together. Useful to Merge different focuses of same image.
- Zoom in/out
- Zoomed preview
- Rotation at 90, 180, 270 or custom
- Image flipping; horizontal or vertical axis
- Intensity histogram.
- Image Information
- Redo/Undo on all operations.

Image Processing

- Background subtraction and contrast enhancement of color or grayscale images
- Arithmetic image functions (Boolean Math; Add, AND, OR, XOR, DIFF, MIN, MAX, +, -, /, *, And Simple).

Routine Filters

- Invert, Brightness, Contrast, Hue, Saturation, Blur, Noise Remove, Emboss, Engrave, Gamma R, Gamma G, Gamma B, Yellow, Magenta, Cyan, Mosaic, Smooth, Desaturation, Pseudo Color, Colorize, Oilify, Despeckle, Posterize.

Special Filters & Kernels

- High Boost, High Spatial, Low Pass Spatial, Ranking (Max, Med, Min), Point detection, Line detection, Homogeneity

Edge Detection

- Laplacing, Sobel, Krisch, Prewitt Gradient, Shift & Difference, Combine, Contrast Base, Quick, Range And Variance.

Morphometry

- Skeletonizing, Pruning, SKIZ, Histogram Equalization, Histogram Smoothing, Histogram Peak, Histogram Valley, Segmentation by Over/Under and Quantized, Contoring, Dilation / Erosion on Binary, Gray & colored Images, Opening/ Closing on Gray & Binary Images, Special Opening/Closing, Split/Combine of RGB, YUV, YIQ, XYZ, & HSL, Changing any Image to 1, 4, 8 & 24 bits, Medial Axis. Transformation, Halftone.
- Image Addition, Image Average, Image Subtraction, Image Multiplication.



Softwares

Measurement

- Spatial calibration
- Line measurements for Distance, Length, Width, Perimeter, Angle, Three Point Radius.
- Area by enclosed line controlled by four arrow keys available on keyboard arrows with zoomed
- preview.

Count And Classification

- Identification of objects in an image, count them, obtain several features measurements. Objects identification by user or automatically. User defined classification on basis of size or intensity.

Threshold Particle Measurement

- Manual, Auto bright and Auto dark methods to identify intensity range defined object to be measured.
- Various calculation & measurements available for selected Particle are; Dimensions, Area, Perimeter, Feret Length, Min/Max Radius, Thread Length, Thread Width, Fibre Length, Fibre Width.

Morphometry

- Roundness, Shape, Orientation, Elongation, Equal Circular Diameter, Equal Sphere Volume.

Locational

- Centroid X, Centroid Y, Major X1, Major Y1, Minor X1, Minor Y1, Major X2, Major Y, Major X2, Minor Y2, Box X1, Box X2, Box Y, Box Y2 & Box Area.

Phase

- Measure area fraction & volume fraction. Identify multiple phases within Micro Structure. Also delineate phases from the histogram as per ASTM Standard E562 & E1245.

Nodules

- MEASURE Nodularity as per ASTM 247 standard. The Nodules & Flakes are separated on the basis of its shape and aspect ratio.
- The detail measurement of each microstructure is available for further analysis.
- The processed image displays non-Nodules in different color.
- The Nodules can be classify by its range on the basis of its size & shape.

Porosity

- They are recognized on the basis of its intensity as per ASTM B-276 standard. The measurement of each pore is displayed. The processed image displays pores in Red color.

Coating Thickness

- This application rapidly measures the thickness or width of a coating at multiple positions along a sample as per ASTM B487 standard.
- Tabulated results available for min/max and mean of width measured at various points of sample cross section.

Decarburisation

Measured depth or width of decarburisation occurs as per ASTM 1077 standard.

Grain Size

- The module analyse Grain image and measure the Grain no. & Grain size using ASTM E 112 method.
- The options for measurement available are 1. Manual Trace, 2. Popular Comparison Method, 3. Quick single Grain measurement, 4. ALA method, 5. Interception method.
- Various filters to make user defined templates. Grain boundary repair mathematical function.
- Non-Metallic Inclusion
- Measure inclusions and report ASTM E-45, E-1245 numbers, cumulative length, width ratio.
- Graphite Flakes
- Graphite Flakes length, width, distribution and percentage as per ASTM A-247-67

Report

- Three options: Direct printout with original image processed Image & Tabular results
- Export to MS Office or Excel for further modification.



Softwares

Textile Software (40004040)

This new program with our polarizing microscope is very useful for quality control or textile testing laboratories for the analysis, micro-measurement of fiber, yarn, threads, textile Material, non-woven fabrics etc.

The real full screen display of image, acquisition, annotations, enhancement with hundred of filters, measurements, statistical processing of measure data are few of the capability of Textile Pro.

Photographs of all Fibers view are pre loaded in the software to identify fibers without prior knowledge in the same. The library can be created & retrieved within the same programme.

Few of common usage of Textile Pro are:

- Micro analysis of yarns and fiber sections.
- Measurements of length, surfaces, perimeters, angles, distance between two points or lines or objects.
- Fast and easy way the fineness analysis of single fibers.
- Check the purchased material can be identify the type of fiber, comparing it with the fiber pictures stored in the Data bank with the longitudinal and the sectional views.
- Check and measure the quality and shape of Lycra or synthetic Multifilament single threads.
- Analyse the compactness of non-woven Fabrics.
- Analyse the Yarn structure and detect possible defects.
- Detect, identify and measure possible impurities contained in textile materials.
- Analyse the compactness of non-woven fabrics.
- Measure section surfaces and perimeters.
- Analyse mechanical parts like needle points spinnerets etc.
- Macro analysis of a yarn section.
- Reduce the fabric warp and weft density to a cm or inch.

Particle Size/Pharma Software (40004041)

It is useful to measure & analyse particle size, particles shape, particle count, foreign particle detection, particle structure

The use of microscopic image analysis system is the most reliable technique to characterize particle shape and to characterize a particle size and volume distribution. Tradition method, such as laser diffraction, although efficient, gives limited information on particle shape. The particle size, distribution and shape of the particles can effect bulk properties, product performance, process ability, stability and appearance of the end product in Pharma industry.

The software is useful to measure and analyse the particle size, particles shape, particle count, foreign particle detection, particle structure, homogeneity, surface coatings thickness. For spherical particles (which are rarely uncouneted in pharmaceutical powders) the diameters are sufficient to describe the particle size. For non-spherical particles, feret's diameter, Particle orientation, Particle shape, elongation, convexity, circularity, circle equivalent diameter are measured.

This software is also useful to study the polarizing effects which study the cross section through pharmaceutical tablets by preparing thin-sections on slide with UV curing adhesive for final polishing. The cross section reveal the spatial distribution of components in the tablets so that any post compression change (eg polymorph conversions or change in the hydration state of components) can be investigated.



Acessories

Semiplan Objective (din Size) 10x (40004042)

Semiplan Objective (din Size) 40x/ 45x (40004043)

Semiplan Objective (din Size) 60x/ dry (40004044)

Semiplan Objective (din Size) 100x/ dry (40004045)

Semiplan Objective (din Size) 100x/ oil (40004046)

Semiplan Objective (din Size) 20x (40004047)

Eyepiece 10x (40004048)

Eyepiece 15x (40004049)

Eyepiece 16x (40004050)

Eyepiece WF-10x (40004051)

Eyepiece WF-20x (40004052)

Eyepiece WF-16x (40004053)

Eyepiece (coated,stainfree) Wf-10 (18mm) (40004054)

Eyepiece (coated,stainfree) Wf-10X (20mm) (40004055)

Halogen Lamp 6v-20w (40004056)

Halogen Lamp 12v-20w (40004057)

Wooden Box For Student Microscope (40004058)

Wooden Box For Binocular Microscope (40004059)

Wooden Box For Research Microscope (40004060)

Eye Piece Pointer 10x (40004061)

Eye Piece Micrometre Scale 10x (40004062)

GUPTATM Agencies

An ISO 9001:2008 Certified Company



Deals in

**Biological Models | Demonstrational Acrylic Models | Working Models | Soda Glassware
| Borosilicate Glassware | Laboratory Plasticware | Porcelainware | Physics Lab
Instruments | Chemistry & Biology Lab Instruments | Math Lab Instruments | Electronic
Lab Instruments | Mechanical Lab Instruments | Pharmacy Lab Instruments | Electrical
Lab Instruments | Oil & Petroleum Lab Instruments | Analysis & Diagnostic Lab
Instruments | Microscopes**

Address: Gupta Agencies 5341 Punjabi Mohalla Ambala Cantt – 133001 (Haryana INDIA)
Mobile No: +91-9896301766, +91-9896311766, +91-9416021766
Email Address: info@guptaagenciesindia.com, info@labfabricatorsindia.com | **Website:**
www.guptaagenciesindia.com

A Complete House of Scientific and Laboratory Equipment